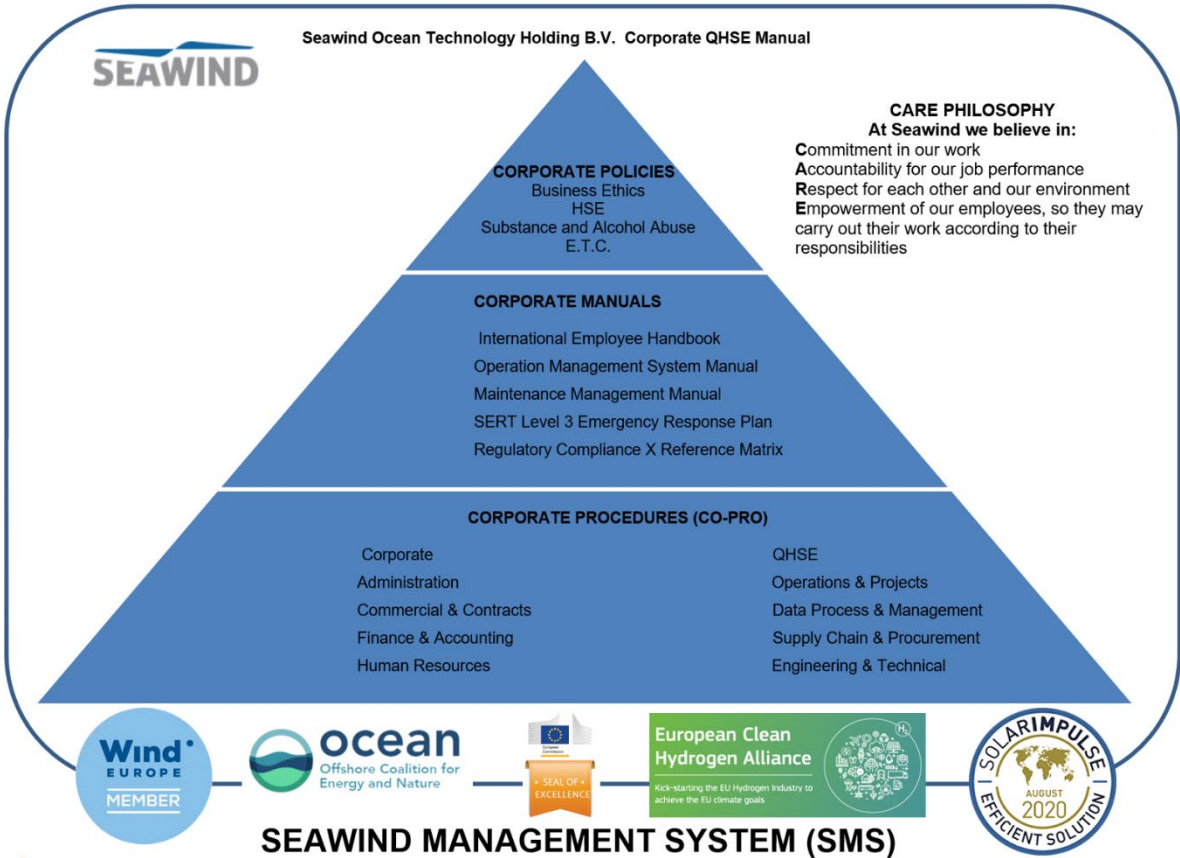


Policy No: **CO-POL- 802**

Policy Title: **Environmental Policy**



1. Introduction

In recognition of the potential impact that our activities have on the environment, Seawind – with this document – commits itself unequivocally to this environmental policy statement and to work towards the aims and requirements contained within ISO 14001:2015 EMS.

Seawind recognize the need to adopt a balanced approach to the use of materials, substances and construction resources and operation, including reducing the energy usage of Seawind offices, facilities, offshore units and etc.

Environmental impact is considered during procurement and prior to the installation of building services engineering materials and components where possible. A life cycle approach is considered in the use of, or changes to, the operational effects of services and/or their component parts that do not endanger environmental or personal health.

2. Valid for

This policy is applicable for Seawind Ocean Technology Holding B.V. and all its subsidiaries and affiliates.

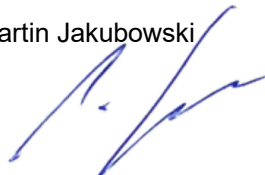
3. Purpose

Seawind will take a systematic approach towards achieving economic, environmental, and social objectives, by seeking to: -

- Brief both employees and Sub-contractors to incorporate an environmentally sound approach from the initial planning stage of works activities or projects.
- Carry out a life-cycle approach to aid the design and use, encouraging biodiversity and intergenerational responsibility in assistance to engineers and designers, where applicable, from inception through to deployment and use and beyond to ultimate demolition and recycle/disposal.
- Always avoid pollution and resource depletion.
- Eliminate or minimize and control waste in all forms resultant from company-related activities.
- Communicate these actions to Clients, contractors, and end-users.
- Be ever mindful of the environment in which we live and seek to minimize the effects upon the environment caused by our activities or our appointed subcontractors/supply chain.
- Uphold and maintain discussions with the Environment Agencies in each operating country/area and SEPA, and may comply with the relevant conditions.

In pursuance of the above we will promote the use of energy efficient equipment wherever possible, which is compliant with current legislation and attains the standards and goals set out by the regulating bodies.

Martin Jakubowski



Chairman

Seawind Ocean Technology Holding B.V